

Frame Size	Poles	Drive End	Non-Drive End
		International type	International type
56	2~4	62012Z	62012Z
63	2~4	62012Z	62012Z
71	2~6	62022Z	62022Z
80	2~8	62042Z	62042Z
90	2~8	62052Z	62052Z
100	2~8	62062Z	62062Z
112	2~8	63062Z	63062Z
132	2~8	63082Z	63082Z
160	2~8	63092ZC3	63092ZC3
180	2~8	6311C3	6311C3
200	2~8	6312C3	6312C3
225	2~8	6313C3	6313C3
250	2~8	6314C3	6314C3
280	2	6314C3	6314C3
	4~8	6317C3	6317C3
315	2	6317C3	6317C3
	4~10	NU319C3	6319C3
355	2	6319C3	6319C3
	4~10	NU322C3	6322C3
400	4~10	NU326C3	6326C3

MAIN DATA FOR TERMINAL BOX

Classified number	Frame size	Max.F.Amps	Entry hole size
			International standard
1	H-56-80	2.6	2 x M20 x 1.5
2	H90-100	6.8	2 x M25 x 1.5
3	H112-132	15.4	2 x M32 x 1.5
4	H160-180	42.5	2 x M40 x 1.5
5	H200-225	84.2	2 x M50 x 1.5
6	H250-280	166.6	2 x M63 x 1.5
7	H315	358	2 x M63 x 1.5
8	H355	546	2 x M63 x 1.5
9	H400	600	3 x M63 x 1.5

The mounting arrangements of the motors comply with IEC34-7 Recommendation. There are four basic arrangements shown as the following tables and figures.

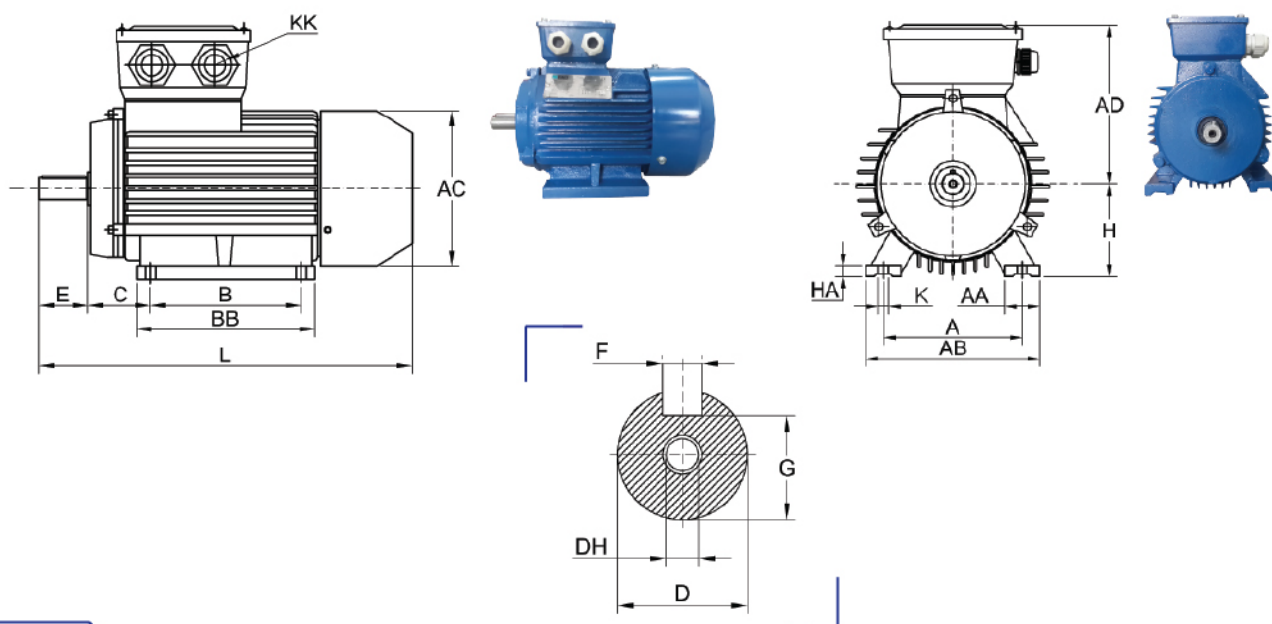
Fundamental arrangement	B3					
Mounting arrangement	B3	B6	B7	B8	V5	V6
Diagram						
Range of Manufacture (framesize)	56-400	56-160				

Fundamental arrangement	B5			B35		
Mounting arrangement	B5	V1	V3	B35	V15	V36
Diagram						
Range of Manufacture (framesize)	56-280	56-355	56-160	56-400	56-160	

Fundamental arrangement	B14					
Mounting arrangement	B14	B34	V18	V58	V19	V69
Diagram						
Range of Manufacture (framesize)	56-132					

NO	Frame reference and size	Rated power		Full load current at rated voltage			Frequency at constant power	Direct on line starting torque ratio	Direct on line pull out torque ratio	Direct on line starting current ratio	Efficiency	Power factor	Rotor inertia WK ²
		Type	Power kW	HP	380V	400V	415V	Frequency (HZ)	LRT RLT	BDI RLT	LRA RLA	n (%)	P.F. Cos Ø
2 POLE/3000 rpm													
1	F..561-2	0.09	0.12	0.29	0.27	0.26	50	2.2	2.1	5.2	62.00	0.77	0.00018
2	F..562-2	0.12	0.18	0.37	0.35	0.33	50	2.2	2.1	5.2	64.00	0.78	0.00023
3	F..63M1-2	0.18	0.25	0.53	0.50	0.49	50	2.3	2.3	5.5	65.00	0.80	0.00031
4	F..63M2-2	0.25	0.34	0.69	0.65	0.63	50	2.3	2.3	5.5	68.00	0.81	0.00060
5	F..71M1-2	0.37	0.5	1.01	0.96	0.92	50	2.2	2.3	6.1	69.00	0.81	0.00075
6	F..71M2-2	0.55	0.75	1.38	1.30	1.26	50	2.3	2.3	6.1	74.00	0.82	0.00090
7	F..80M1-2	0.75	1	1.77	1.67	1.60	50	2.3	2.2	6.1	75.00	0.83	0.00120
8	F..80M2-2	1.1	1.5	2.61	2.34	2.24	50	2.3	2.2	6.9	76.20	0.84	0.00140
9	F..90S-2	1.5	2	3.46	3.29	3.15	50	2.3	2.2	7.0	78.50	0.84	0.00290
10	F..90L-2	2.2	3	4.85	4.60	4.40	50	2.3	2.2	7.0	81.00	0.85	0.00550
11	F..100L-2	3	4	6.34	6.02	5.77	50	2.3	2.2	7.5	82.60	0.87	0.01090
12	F..112M-2	4	5.5	8.20	7.80	7.46	50	2.3	2.2	7.5	84.20	0.88	0.01260
13	F..132S1-2	5.5	7.5	11.10	10.50	10.10	50	2.3	2.2	7.5	85.70	0.88	0.03770
14	F..132S2-2	7.5	10	14.90	14.15	13.56	50	2.3	2.2	7.5	87.00	0.88	0.04990
15	F..160M1-2	11	15	21.30	20.20	19.40	50	2.3	2.2	7.5	88.00	0.89	0.05500
16	F..160M2-2	15	20	28.80	27.40	26.20	50	2.3	2.2	7.5	89.00	0.89	0.07500
17	F..160L-2	18.5	25	34.70	32.97	31.60	50	2.3	2.2	7.5	90.00	0.90	0.12400
4 POLE/1500 rpm													
18	F..561-4	0.06	0.08	0.23	0.22	0.21	50	2.1	2.0	4.0	56.00	0.70	0.00030
19	F..562-4	0.09	0.12	0.33	0.31	0.30	50	2.1	2.0	4.0	58.00	0.72	0.00040
20	F..63M1-4	0.12	0.18	0.44	0.42	0.40	50	2.2	2.1	4.4	57.00	0.72	0.00050
21	F..63M2-4	0.18	0.25	0.62	0.59	0.56	50	2.2	2.1	4.4	60.00	0.73	0.00060
22	F..71M1-4	0.25	0.34	0.79	0.75	0.72	50	2.2	2.1	5.2	65.00	0.74	0.00080
23	F..71M2-4	0.37	0.5	1.12	1.10	1.00	50	2.2	2.1	5.2	67.00	0.75	0.00130
24	F..80M1-4	0.55	0.75	1.52	1.44	1.38	50	2.3	2.4	5.2	71.00	0.75	0.00180
25	F..80M2-4	0.75	1	1.95	1.85	1.77	50	2.3	2.3	6.0	73.00	0.76	0.00210
26	F..90S-4	1.1	1.5	2.85	2.70	2.60	50	2.3	2.3	6.0	76.20	0.77	0.00230
27	F..90L-4	1.5	2	3.72	3.53	3.39	50	2.3	2.3	6.0	78.50	0.78	0.00270
28	F..100L1-4	2.2	3	5.09	4.83	4.60	50	2.3	2.3	7.0	81.00	0.81	0.00540
29	F..100L2-4	3	4	6.78	6.40	6.17	50	2.3	2.3	7.0	82.60	0.82	0.00670
30	F..112M-4	4	5.5	8.80	8.36	8.00	50	2.3	2.3	7.0	84.20	0.82	0.00950
31	F..132S-4	5.5	7.5	11.70	11.12	10.65	50	2.3	2.3	7.0	85.70	0.83	0.02140
32	F..132M-4	7.5	10	15.60	14.80	14.20	50	2.3	2.3	7.0	87.00	0.84	0.29600
33	F..160M-4	11	15	22.30	21.20	20.30	50	2.3	2.3	7.0	88.00	0.85	0.07470
34	F..160L-4	15	20	30.10	28.60	27.40	50	2.3	2.3	7.0	89.00	0.85	0.09180
6 POLE/1000 rpm													
35	F..71M1-6	0.18	0.25	0.74	0.70	0.67	50	2.0	1.9	4.0	56.00	0.66	0.00110
36	F..71M2-6	0.25	0.34	0.95	0.90	0.86	50	2.0	1.9	4.0	59.00	0.68	0.00140
37	F..80M1-6	0.37	0.50	1.23	1.17	1.12	50	2.0	1.9	4.7	62.00	0.70	0.00160
38	F..80M2-6	0.55	0.75	1.70	1.60	1.55	50	2.1	1.9	4.7	65.00	0.72	0.00190
39	F..90S-6	0.75	1	2.29	2.18	2.08	50	2.1	2.0	5.3	69.00	0.72	0.00290
40	F..90L-6	1.1	1.5	3.18	3.02	2.90	50	2.1	2.0	5.5	72.00	0.73	0.00350
41	F..100L-6	1.5	2	4.00	3.80	3.64	50	2.1	2.0	5.5	76.00	0.76	0.00690
42	F..112M-6	2.2	3	5.60	5.32	5.10	50	2.1	2.0	6.5	79.00	0.76	0.01400
43	F..132S-6	3	4	7.40	7.03	6.73	50	2.1	2.1	6.5	81.00	0.76	0.02860
44	F..132M1-6	4	5.5	9.50	9.03	8.65	50	2.1	2.1	6.5	82.00	0.76	0.03570
45	F..132M2-6	5.5	7.5	12.60	11.97	11.46	50	2.1	2.1	6.5	84.00	0.77	0.04490
46	F..160M-6	7.5	10	16.90	16.10	15.60	50	2.1	2.0	6.5	86.00	0.78	0.08100
47	F..160L-6	11	15	24.20	22.99	22.02	50	2.1	2.0	6.5	87.50	0.79	0.01160
8 POLE/750 rpm													
48	F..80M1-8	0.18	0.25	0.83	0.79	0.75	50	1.9	1.8	3.3	51.00	0.61	0.00250
49	F..80M2-8	0.25	0.34	1.10	1.05	1.00	50	1.9	1.8	3.3	54.00	0.61	0.00300
50	F..90S-8	0.37	0.5	1.49	1.40	1.36	50	1.9	1.8	4.0	62.00	0.61	0.00510
51	F..90L-8	0.55	0.75	2.17	2.06	2.00	50	2.0	1.8	4.0	63.00	0.61	0.00650
52	F..100L1-8	0.75	1	2.43	2.30	2.20	50	2.0	1.8	4.0	70.00	0.67	0.00950
53	F..100L2-8	1.1	1.5	3.36	3.20	3.06	50	2.0	1.8	5.0	72.00	0.69	0.01100
54	F..112M-8	1.5	2	4.40	4.22	4.04	50	2.0	1.8	5.0	74.00	0.70	0.02450
55	F..132S-8	2.2	3	6.00	5.70	5.46	50	2.0	1.8	6.0	79.00	0.71	0.03140
56	F..132M-8	3	4	7.80	7.40	7.10	50	2.0	1.8	6.0	80.00	0.73	0.03950
57	F..160M1-8	4	5.5	10.30	9.78	9.37	50	2.0	1.9	6.0	81.00	0.73	0.07530
58	F..160M2-8	5.5	7.5	13.60	12.90	12.38	50	2.0	2.0	6.5	83.00	0.74	0.09310

IM B3

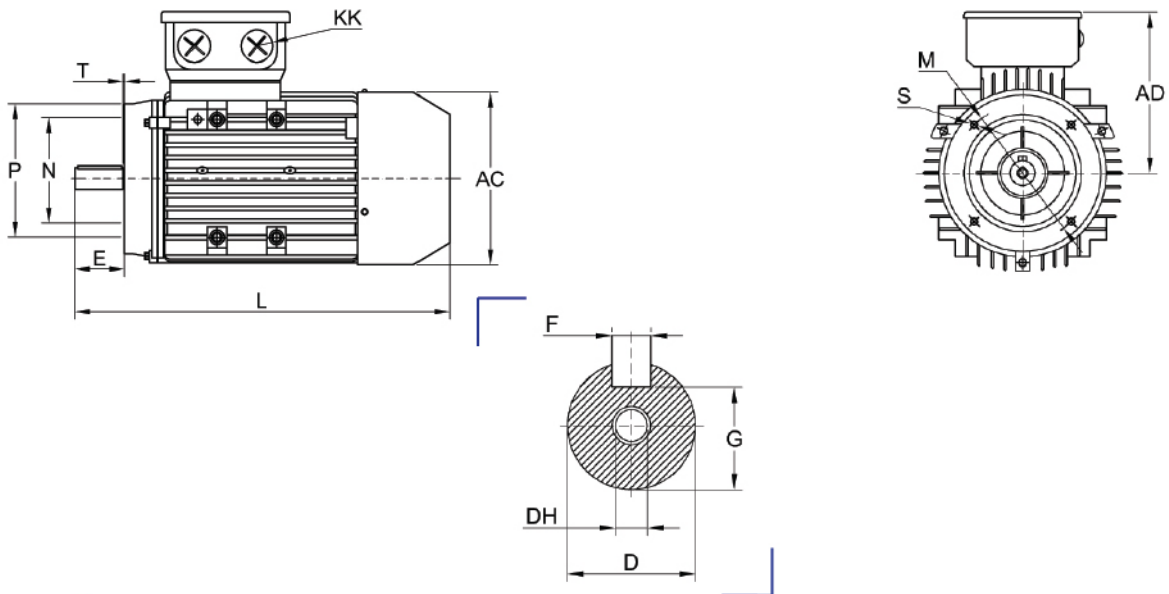


IM B5

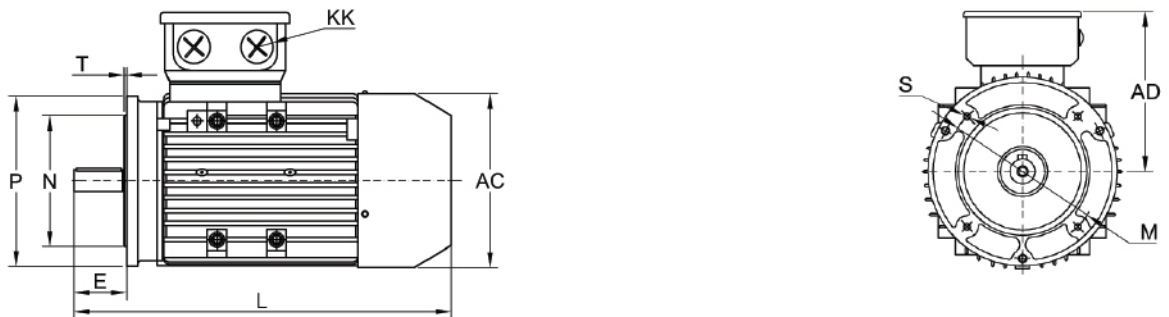


Frame size	Mounting dimensions																Overall dimensions							
																	KK		L	M	N	P	S	T
	A	AA	AB	BB	HA	AC	AD	B	C	D	DH	E	F	G	H	K	METRIC	PG						
F..56	90	23	115	88	7	110	100	71	36	9	M4X12	20	3	7.2	56	5.8	2-M20 X 1.5	2-PG-13.5	199	100	80	120	ø7	3.0
F..63	100	24	135	100	7	130	109	80	40	11	M4X12	23	4	8.5	63	7.0	2-M20 X 1.5	2-PG-13.5	217	115	95	140	ø10	3.0
F..71	112	26	150	110	8	145	127	90	45	14	M5X12	30	5	11	71	7.0	2-M20 X 1.5	2-PG-13.5	245	130	110	160	ø12	3.5
F..80	125	35	165	125	9	175	134	100	50	19	M6X16	40	6	15.5	80	10.0	2-M25 X 1.5	2-PG-16	287	165	130	200	ø12	3.5
F..90S	140	37	180	125	10	195	140	100	56	24	M8X19	50	8	20.0	90	10.0	2-M25 X 1.5	2-PG-16	315	165	130	200	ø12	3.5
F..90L	140	37	180	150	10	195	140	125	56	24	M8X19	50	8	20.0	90	10.0	2-M25 X 1.5	2-PG-16	340	165	130	200	ø12	3.5
F..100L	160	40	205	172	11	215	160	140	63	28	M10X22	60	8	24.0	100	12.0	2-M32 X 1.5	2-PG-21	385	215	180	250	ø15	4.0
F..112M	190	41	230	181	12	240	178	140	70	28	M10X22	60	8	24.0	112	12.0	2-M32 X 1.5	2-PG-21	400	215	180	250	ø15	4.0
F..132S	216	51	270	186	15	275	206	140	89	38	M12X28	80	10	33.0	132	12.0	2-M32 X 1.5	2-PG-21	483	265	230	300	ø15	4.0
F..132M	216	51	270	224	15	275	206	178	89	38	M12X28	80	10	33.0	132	12.0	2-M32 X 1.5	2-PG-21	510	265	230	300	ø15	4.0
F..160M	254	55	320	260	18	330	255	210	108	42	M16X36	110	12	37.0	160	15.0	2-M40 X 1.5	2-PG-29	615	300	250	350	ø19	5.0
F..160L	254	55	320	304	18	330	255	254	108	42	M16X36	110	12	37.0	160	15.0	2-M40 X 1.5	2-PG-29	670	300	250	350	ø19	5.0

IM B14A



IM B14B



Frame size	AC	AD	D	DH	E	F	G	KK		L	B14A					B14B				
								METRIC	PG		M	N	P	S	T	M	N	P	S	T
FAZ..56	110	100	9	M4X12	20	3	7.2	2-M20 X 1.5	2-PG-13.5	199	65	50	80	M5	2.5	85	70	105	M6	2.5
FAZ..63	130	109	11	M4X12	23	4	8.5	2-M20 X 1.5	2-PG-13.5	217	75	60	90	M5	2.5	100	80	120	M6	2.5
FAZ..71	145	127	14	M5X12	30	5	11.0	2-M20 X 1.5	2-PG-13.5	245	85	70	105	M6	2.5	115	95	140	M8	3.0
FAZ..80	175	134	19	M6X16	40	6	15.5	2-M25 X 1.5	2-PG-16	297	100	80	120	M6	3.0	130	110	160	M8	3.5
FAZ..90S	195	140	24	M8X19	50	8	20.0	2-M25 X 1.5	2-PG-16	315	115	95	140	M8	3.0	130	110	160	M8	3.5
FAZ..90L	195	140	24	M8X19	50	8	20.0	2-M25 X 1.5	2-PG-16	340	115	95	140	M8	3.0	130	110	160	M8	3.5
FAZ..100L	215	160	28	M10X22	60	8	24.0	2-M32 X 1.5	2-PG-21	385	130	110	160	M8	3.5	165	130	200	M10	3.5
FAZ..112M	240	178	28	M10X22	60	8	24.0	2-M32 X 1.5	2-PG-21	400	130	110	160	M8	3.5	165	130	200	M10	3.5
FAZ..132S	275	206	38	M12X28	80	10	33.0	2-M32 X 1.5	2-PG-21	483	165	130	200	M10	3.5	215	180	250	M12	4.0
FAZ..132M	275	206	38	M12X28	80	10	33.0	2-M32 X 1.5	2-PG-21	510	165	130	200	M10	3.5	215	180	250	M12	4.0
FAZ..160M	330	255	42	M16X36	110	12	37.0	2-M40 X 1.5	2-PG-29	615	215	180	250	M12	4.0	265	230	300	M16	5.0
FAZ..160L	330	255	42	M16X36	110	12	37.0	2-M40 X 1.5	2-PG-29	670	215	180	250	M12	4.0	265	230	300	M16	5.0

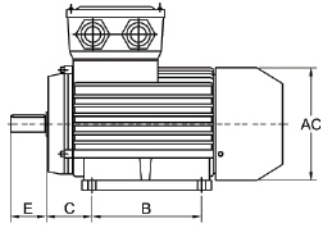


NO	Frame reference and size	Full load current at rated voltage			Rated power	Full load speed in revolutions per minute	Efficiency	Power factor	Direct on line starting torque ratio	Direct on line starting current ratio	Direct on line pull out torque ratio	Mean sound pressure level @1m on no load	Weight	Rotor inertia WK ³
	Type	V			Output kW	Speed r/min	EFF. %	P.F. Cos Ø	LRT RLT	LRA RLA	BDT RLT	Noise LwdB(A)	Weight kg	J kgm2
2 POLE / 3000 rpm														
1	F..-80M1-2	1.77	1.74	1.68	0.75	2840	75.0	0.83	2.2	6.1	2.3	67	16	0.00075
2	F..-80M2-2	2.61	2.48	2.39	1.1	2840	76.2	0.84	2.2	6.9	2.3	67	17	0.00090
3	F..-90S-2	3.46	3.28	3.16	1.5	2850	78.5	0.84	2.2	7.0	2.3	72	20	0.00120
4	F..-90L-2	4.85	4.61	4.45	2.2	2855	81.0	0.85	2.2	7.0	2.3	72	23	0.00140
5	F..-100L-2	6.34	6.03	5.81	3	2860	82.6	0.87	2.2	7.5	2.3	76	30	0.00290
6	F..-112M-2	8.20	7.79	7.51	4	2880	84.2	0.88	2.2	7.5	2.3	77	41	0.00550
7	F..-132S1-2	11.10	10.53	10.15	5.5	2900	85.7	0.88	2.2	7.5	2.3	80	57.5	0.01090
8	F..-132S2-2	14.90	14.10	13.60	7.5	2900	87.0	0.88	2.2	7.5	2.3	80	60.5	0.01260
9	F..-160M1-2	21.20	20.20	19.50	11	2930	88.4	0.89	2.2	7.5	2.3	86	107	0.03770
10	F..-160M2-2	28.60	27.20	26.20	15	2930	89.4	0.89	2.2	7.5	2.3	86	114	0.04990
11	F..-160L-2	34.70	33.00	31.80	18.5	2930	90.0	0.90	2.2	7.5	2.3	86	133	0.05500
12	F..-180M-2	41.00	39.00	37.60	22	2940	90.5	0.90	2.0	7.5	2.3	89	165	0.07500
13	F..-200L1-2	55.40	52.60	50.70	30	2950	91.4	0.90	2.0	7.5	2.3	92	218	0.12400
14	F..-200L2-2	67.90	64.50	62.20	37	2950	92.0	0.90	2.0	7.5	2.3	92	230	0.13900
15	F..-225M-2	82.10	78.00	75.20	45	2960	92.5	0.90	2.0	7.5	2.3	92	290	0.23300
16	F..-250M-2	100.00	94.80	91.40	55	2970	93.0	0.90	2.0	7.5	2.3	93	359	0.31200
17	F..-280S-2	135.00	129.00	124.00	75	2975	93.6	0.90	2.0	7.0	2.3	94	475	0.57900
18	F..-280M-2	160.00	152.00	147.00	90	2975	93.9	0.91	2.0	7.1	2.3	94	510	0.67500
19	F..-315S-2	195.00	186.00	179.00	110	2975	94.0	0.91	1.8	7.1	2.2	96	875	1.18000
20	F..-315M-2	233.00	222.00	214.00	132	2975	94.5	0.91	1.8	7.1	2.2	96	963	1.82000
21	F..-315L1-2	279.00	265.00	256.00	160	2975	94.6	0.92	1.8	7.1	2.2	99	1010	2.08000
22	F..-315L2-2	348.00	331.00	319.00	200	2975	94.8	0.92	1.8	7.1	2.2	99	1138	2.38000
23	F..-355M-2	433.00	412.00	397.00	250	2980	95.2	0.92	1.6	7.1	2.2	103	1900	3.00000
24	F..-355L-2	545.00	518.00	499.00	315	2980	95.4	0.92	1.6	7.1	2.2	103	2300	3.50000
4 POLE / 1500 rpm														
1	F..-80M1-4	1.57	1.49	1.44	0.55	1390	71	0.75	2.4	5.2	2.3	58	15	0.00180
2	F..-80M2-4	2.05	1.95	1.88	0.75	1380	73	0.76	2.3	6.0	2.3	58	15.5	0.00210
3	F..-90S-4	2.85	2.71	2.61	1.1	1390	76.2	0.77	2.3	6.0	2.3	61	19	0.00230
4	F..-90L-4	3.72	3.54	3.41	1.5	1400	78.5	0.78	2.3	6.0	2.3	61	23	0.00270
5	F..-100L1-4	5.09	4.90	4.72	2.2	1410	80	0.81	2.3	7.0	2.3	64	29	0.00540
6	F..-100L2-4	6.78	6.39	6.16	3	1410	82.6	0.82	2.3	7.0	2.3	64	31	0.00670
7	F..-112M-4	8.80	8.36	8.06	4	1435	84.2	0.82	2.3	7.0	2.3	65	42	0.00950
8	F..-132S1-4	11.70	11.20	10.80	5.5	1440	85.7	0.83	2.3	7.0	2.3	71	63.5	0.02140
9	F..-132M-4	15.60	14.80	14.30	7.5	1450	87	0.84	2.3	7.0	2.3	71	72	0.02960
10	F..-160M-4	22.50	21.40	20.60	11	1460	88.4	0.84	2.2	7.0	2.3	75	110	0.07470
11	F..-160L-4	30.00	28.50	27.50	15	1460	89.4	0.85	2.2	7.5	2.3	75	129	0.09180
12	F..-180M-4	36.30	34.50	33.30	18.5	1470	90	0.86	2.2	7.5	2.3	76	160	0.13900
13	F..-180L-4	43.20	40.80	39.30	22	1470	90.5	0.86	2.2	7.5	2.3	76	178	0.15800
14	F..-200L-4	57.60	55.10	53.10	30	1470	91.4	0.86	2.2	7.2	2.3	79	228	0.26200
15	F..-225S-4	70.20	66.70	64.30	37	1475	92	0.87	2.2	7.2	2.3	81	288	0.40600
16	F..-225M-4	84.90	80.70	77.80	45	1475	92.5	0.87	2.2	7.2	2.3	81	313	0.46900
17	F..-250M-4	103.00	98.10	94.60	55	1480	93	0.87	2.2	7.2	2.3	83	376	0.66000
18	F..-280S-4	138.30	131.00	127.00	75	1480	93.6	0.88	2.2	6.8	2.3	86	508	1.12000
19	F..-280M-4	165.00	157.00	152.00	90	1480	93.9	0.88	2.2	6.8	2.3	86	581	1.64000
20	F..-315S-4	201.00	191.00	184.00	110	1480	94.5	0.88	2.1	6.9	2.2	93	846	3.10000
21	F..-315M-4	240.00	228.00	220.00	132	1480	94.8	0.88	2.1	6.9	2.2	93	940	3.62000
22	F..-315L1-4	288.00	273.00	264.00	160	1480	94.9	0.89	2.1	6.9	2.2	97	1044	4.13000
23	F..-315L2-4	360.00	342.00	329.00	200	1480	94.9	0.89	2.1	6.9	2.2	97	1162	4.73000
24	F..-355M-4	443.00	421.00	406.00	250	1490	95.2	0.90	2.1	6.9	2.2	101	1700	6.50000
25	F..-355L-4	559.00	531.00	511.00	315	1490	95.2	0.90	2.1	6.9	2.2	101	1900	8.20000

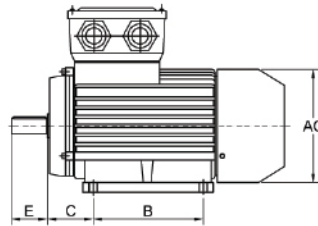


NO	Frame reference and size	Full load current at rated voltage			Rated power	Full load speed in revolutions per minute	Efficiency	Power factor	Direct on line starting torque ratio	Direct on line starting current ratio	Direct on line pull out torque ratio	Mean sound pressure level @1m on no load	Weight	Rotor inertia WK ³
		V												
			380A	400A	415A									
6 POLE / 1000 rpm														
1	F..-80M1-6	1.30	1.23	1.19	0.37	880	62	0.70	1.9	4.7	2.0	54	15	0.00160
2	F..-80M2-6	1.80	1.70	1.64	0.55	880	65	0.72	1.9	4.7	2.1	54	16	0.00190
3	F..-90S-6	2.29	2.18	2.10	0.75	905	69	0.72	2.0	5.3	2.1	57	20	0.00290
4	F..-90L-6	3.18	3.02	2.91	1.1	905	72	0.73	2.0	5.5	2.1	57	23	0.00350
5	F..-100L1-6	4.00	3.80	3.66	1.5	920	76	0.75	2.0	5.5	2.1	61	29	0.00690
6	F..-112M-6	5.60	5.29	5.10	2.2	935	79	0.76	2.0	6.5	2.1	65	41	0.01400
7	F..-132S-6	7.40	7.03	6.78	3	960	81	0.76	2.1	6.5	2.1	69	59	0.02860
8	F..-132M1-6	9.75	9.26	8.93	4	960	82	0.76	2.1	6.5	2.1	69	66	0.03570
9	F..-132M2-6	12.90	12.30	11.80	5.5	960	84	0.77	2.1	6.5	2.1	69	76.5	0.04490
10	F..-160M-6	17.20	16.30	15.80	7.5	970	86	0.77	2.0	6.5	2.1	73	106	0.08100
11	F..-160L-6	24.50	23.30	22.40	11	970	87.5	0.78	2.0	6.5	2.1	73	122	0.11600
12	F..-180L-6	31.60	30.00	28.90	15	970	89	0.81	2.0	7.0	2.1	73	167	0.20700
13	F..-200L1-6	38.60	36.60	35.30	18.5	980	90	0.81	2.1	7.0	2.1	76	236	0.31500
14	F..-200L2-6	44.70	42.50	41.00	22	980	90	0.83	2.0	7.0	2.1	76	247	0.36000
15	F..-225M-6	59.30	56.30	54.30	30	980	91.5	0.84	2.0	7.0	2.1	76	287	0.54700
16	F..-250M-6	71.00	67.50	65.10	37	980	92	0.86	2.1	7.0	2.1	78	355	0.84300
17	F..-280S-6	86.00	81.70	78.70	45	980	92.5	0.86	2.1	7.0	2.0	80	444	1.39000
18	F..-280M-6	104.00	99.50	95.90	55	980	92.8	0.86	2.1	7.0	2.0	80	498	1.65000
19	F..-315S-6	142.00	135.00	130.00	75	985	93.5	0.86	2.0	6.7	2.0	85	859	4.11000
20	F..-315M-6	169.00	161.00	155.00	90	985	93.8	0.86	2.0	6.7	2.0	85	950	4.78000
21	F..-315L1-6	207.00	196.00	189.00	110	985	94	0.86	2.0	6.7	2.0	85	1031	5.45000
22	F..-315L2-6	245.00	232.00	224.00	132	985	94.2	0.87	2.0	6.7	2.0	85	1107	6.12000
23	F..-355M1-6	292.00	278.00	268.00	160	990	94.5	0.88	1.9	6.7	2.0	92	1550	9.50000
24	F..-355M2-6	365.00	347.00	335.00	200	990	94.5	0.88	1.9	6.7	2.0	92	1600	10.40000
25	F..-355L-6	457.00	434.00	418.00	250	990	94.5	0.88	1.9	6.7	2.0	92	1700	12.40000
8 POLE / 750 rpm														
1	F..-80M1-8	0.83	0.84	0.80	0.18	645	51	0.61	1.8	3.3	1.9	52	15	0.00250
2	F..-80M2-8	1.10	1.10	1.06	0.25	645	54	0.61	1.8	3.3	1.9	52	16	0.00300
3	F..-90S-8	1.49	1.41	1.36	0.37	675	62	0.61	1.8	4.0	1.9	56	20	0.00510
4	F..-90L-8	2.17	2.07	1.99	0.55	680	63	0.61	1.8	4.0	2.0	56	23	0.00650
5	F..-100L1-8	2.43	2.31	2.22	0.75	680	70	0.67	1.8	4.0	2.0	59	29	0.00900
6	F..-100L2-8	3.36	3.20	3.08	1.1	680	72	0.69	1.8	5.0	2.0	59	31	0.01100
7	F..-112M-8	4.40	4.18	4.03	1.5	690	74	0.70	1.8	5.0	2.0	61	41	0.02450
8	F..-132S-8	6.00	5.66	5.46	2.2	710	79	0.71	1.8	6.0	2.0	64	61	0.03140
9	F..-132M-8	7.80	7.41	7.15	3	710	80	0.73	1.8	6.0	2.0	64	74	0.03950
10	F..-160M1-8	10.30	9.76	9.41	4	720	81	0.73	1.9	6.0	2.0	68	95.5	0.07530
11	F..-160M2-8	13.60	12.90	12.50	5.5	720	83	0.74	1.9	6.0	2.0	68	107	0.09310
12	F..-160L-8	17.80	16.90	16.30	7.5	720	85.5	0.75	1.9	6.0	2.0	68	128	0.12600
13	F..-180L-8	25.50	24.20	23.30	11	730	87.5	0.75	2.0	6.5	2.0	70	169	0.20300
14	F..-200L-8	34.10	32.40	31.20	15	730	88	0.76	2.0	6.6	2.0	73	236	0.33900
15	F..-225S-8	41.10	39.00	37.60	18.5	730	90	0.76	1.9	6.6	2.0	73	274	0.49100
16	F..-225M-8	48.90	45.00	43.40	22	730	90.5	0.78	1.9	6.6	2.0	73	290	0.54700
17	F..-250M-8	63.00	60.20	58.10	30	735	91	0.79	1.9	6.5	2.0	75	370	0.83400
18	F..-280S-8	78.00	73.90	71.20	37	740	91.5	0.79	1.9	6.6	2.0	76	488	1.65000
19	F..-280M-8	94.00	89.40	86.10	45	740	92	0.79	1.9	6.6	2.0	76	563	1.93000
20	F..-315S-8	111.00	106.00	102.00	55	735	92.8	0.81	1.8	6.6	2.0	82	852	4.79000
21	F..-315M-8	150.00	143.00	138.00	75	735	93.5	0.81	1.8	6.2	2.0	82	933	5.58000
22	F..-315L1-8	178.00	169.00	163.00	90	735	93.8	0.82	1.8	6.4	2.0	82	1027	6.37000
23	F..-315L2-8	217.00	206.00	199.00	110	735	94	0.82	1.8	6.4	2.0	82	1117	7.23000
24	F..-355M1-8	261.00	248.00	239.00	132	740	93.7	0.82	1.8	6.4	2.0	90	2000	7.90000
25	F..-355M2-8	315.00	299.00	288.00	160	740	94.2	0.82	1.8	6.4	2.0	90	2150	10.30000
26	F..-355L-8	387.00	368.00	355.00	200	740	94.5	0.83	1.8	6.4	2.0	90	2250	12.30000
10 POLE / 600 rpm														
1	F..-315S-10	100.00	95.00	91.00	45	590	91.5	0.75	1.5	6.2	2.0	82	818	4.79000
2	F..-315M-10	121.00	115.00	111.00	55	590	92	0.75	1.5	6.2	2.0	82	903	5.58000
3	F..-315L1-10	162.00	154.00	148.00	75	590	92.5	0.76	1.5	5.8	2.0	82	1007	6.37000
4	F..-315L2-10	191.00	181.00	175.00	90	590	93	0.77	1.5	5.9	2.0	82	1100	7.23000
5	F..-355M1-10	230.00	218.00	211.00	110	590	93.2	0.78	1.3	6.0	2.0	90	1800	7.90000
6	F..-355M2-10	275.00	261.00	252.00	132	590	93.5	0.78	1.3	6.0	2.0	90	2000	10.30000
7	F..-355L-10	334.00	317.00	305.00	160	590	93.5	0.78	1.3	6.0	2.0	90	2500	12.30000

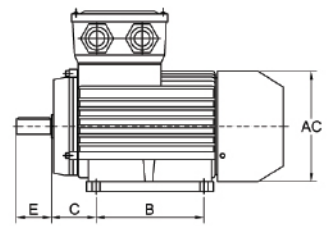
MOUNTING DATA FOR CAST IRON SERIES



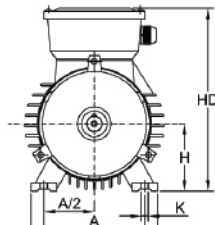
H80-90



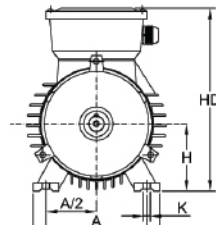
H100-132



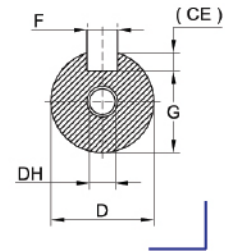
H160-355



H63-71

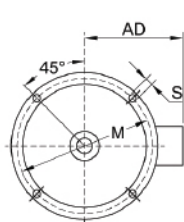


H80-355

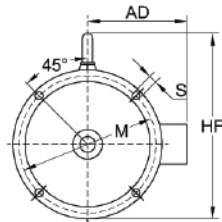


FRAME WITH FEET AND END-SHIELD WITHOUT FLANGE (IM B3)

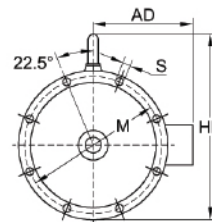
FRAME SIZE	POLES	A	A/2	B	C	D	E	F	G	H	K	AB	AC	AD	HD	L	DH*
F..63M	2 4	100	50	80	40	11	23	4	8.5	63	7	135	130	115	180	230	M4X12
F..71M	2 4 6	112	56	90	45	14	30	5	11	71	7	150	145	127	195	255	M5X12
F..80M	2 4 6 8	125	62.5	100	50	19	40	6	15.5	80	10	165	175	145	220	295	M6X16
F..90S	2 4 6 8	140	70	100	56	24	50	8	20	90	10	180	195	155	250	320	M8X19
F..90L	2 4 6 8	140	70	125	56	24	50	8	20	90	10	180	195	155	250	345	M8X19
F..100L	2 4 6 8	160	80	140	63	28	60	8	24	100	12	205	215	180	270	385	M10X22
F..112M	2 4 6 8	190	95	140	70	28	60	8	24	112	12	230	240	190	300	400	M10X22
F..132S	2 4 6 8	216	108	140	89	38	80	10	33	132	12	270	275	210	345	470	M12X28
F..132M	2 4 6 8	216	108	178	89	38	80	10	33	132	12	270	275	210	345	510	M12X28
F..160M	2 4 6 8	254	127	210	108	42	110	12	37	160	15	320	330	255	420	615	M16X36
F..160L	2 4 6 8	254	127	254	108	42	110	12	37	160	15	320	330	255	420	660	M16X36
F..180M	2 4 6 8	279	139.5	241	121	48	110	14	42.5	180	15	355	380	280	455	700	M16X36
F..180L	2 4 6 8	279	139.5	279	121	48	110	14	42.5	180	15	355	380	280	455	740	M16X36
F..200L	2 4 6 8	318	159	305	133	55	110	16	49	200	19	395	420	305	505	770	M20X42
F..225S	4 8	356	178	286	149	60	140	18	53	225	19	435	470	335	560	815	M20X42
F..225M	2	356	178	311	149	55	110	16	49	225	19	435	470	335	560	820	M20X42
	4 6 8	356	178	311	149	60	140	18	53	225	19	435	470	335	560	845	M20X42
F..250M	2	406	203	349	168	60	140	18	53	250	24	490	510	370	615	920	M20X42
	4 6 8	406	203	349	168	65	140	18	58	250	24	490	510	370	615	920	M20X42
F..280S	2	457	228.5	368	190	65	140	18	58	280	24	550	580	410	680	995	M20X42
	4 6 8	457	228.5	368	190	75	140	20	67.5	280	24	550	580	410	680	995	M20X42
F..280M	2	457	228.5	419	190	65	140	18	58	280	24	550	580	410	680	1045	M20X42
	4 6 8	457	228.5	419	190	75	140	20	67.5	280	24	550	580	410	680	1045	M20X42
F..315S	2	508	254	406	216	65	140	18	58	315	28	635	645	530	845	1185	M20X42
	4 6 8 10	508	254	406	216	80	170	22	71	315	28	635	645	530	845	1220	M20X42
F..315M	2	508	254	457	216	65	140	18	58	315	28	635	645	530	845	1290	M20X42
	4 6 8 10	508	254	457	216	80	170	22	71	315	28	635	645	530	845	1325	M20X42
F..315L	2	508	254	508	216	65	140	18	58	315	28	635	645	530	845	1290	M20X42
	4 6 8 10	508	254	508	216	80	170	22	71	315	28	635	645	530	845	1325	M20X42
F..355M	2	610	305	560	254	75	140	20	67.5	355	28	730	710	655	1010	1500	M20X42
	4 6 8 10	610	305	560	254	95	170	25	86	355	28	730	710	655	1010	1530	M20X42
F..355L	2	610	305	630	254	75	140	20	67.5	355	28	730	710	655	1010	1500	M20X42
	4 6 8 10	610	305	630	254	95	170	25	86	355	28	730	710	655	1010	1530	M20X42



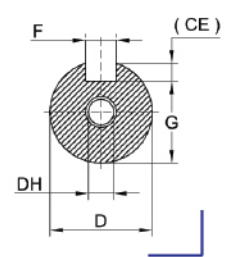
H63-90



H100-200



H200-280

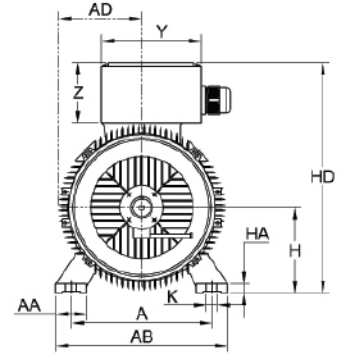
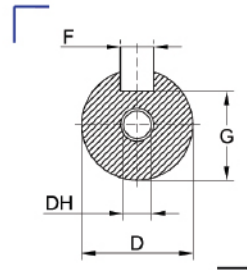
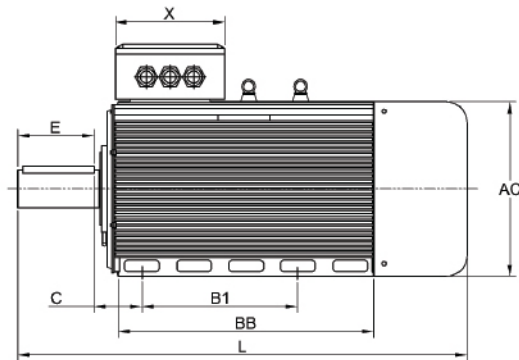


FRAME WITHOUT FEET AND END-SHIELD WITH FLANGE (IM B5)

FRAME SIZE	POLES	D	E	F	G	M	N	P	S	T	FLANGE HOLES	AC	AD	HF	L	DH*
63M	2 4	11	23	4	8.5	115	95	140	10	3	4	130	115	130	230	M4 x 12
71M	2 4 6	14	30	5	11	130	110	160	10	3.5	4	145	127	145	255	M5 x 12
80M	2 4 6 8	19	40	6	15.5	165	130	200	12	3.5	4	175	145	185	295	M6 x 16
90S	2 4 6 8	24	50	8	20	165	130	200	12	3.5	4	195	155	195	320	M8 x 19
90L	2 4 6 8	24	50	8	20	165	130	200	12	3.5	4	195	155	195	345	M8 x 19
100L	2 4 6 8	28	60	8	24	215	180	250	15	4	4	215	180	245	385	M10 x 22
112M	2 4 6 8	28	60	8	24	215	180	250	15	4	4	240	190	265	400	M10 x 22
132S	2 4 6 8	38	80	10	33	265	230	300	15	4	4	275	210	315	470	M12 x 28
132M	2 4 6 8	38	80	10	33	265	230	300	15	4	4	275	210	315	510	M12 x 28
160M	2 4 6 8	42	110	12	37	300	250	350	19	5	4	330	255	385	615	M16 x 36
160L	2 4 6 8	42	110	12	37	300	250	350	19	5	4	330	255	385	660	M16 x 36
180M	2 4 6 8	48	110	14	42.5	300	250	350	19	5	4	380	280	430	700	M16 x 36
180L	2 4 6 8	48	110	14	42.5	300	250	350	19	5	4	380	280	430	740	M16 x 36
200L	2 4 6 8	55	110	16	49	350	300	400	19	5	8	420	305	480	770	M20 x 42
225S	4 8	60	140	18	53	400	350	450	19	5	8	470	335	535	815	M20 x 42
225M	2	55	110	16	49	400	350	450	19	5	8	470	335	535	820	M20 x 42
	4 6 8	60	140	18	53	400	350	450	19	5	8	470	335	535	845	M20 x 42
250M	2	60	140	18	53	500	450	550	19	5	8	510	370	595	920	M20 x 42
	4 6 8	65	140	18	58	500	450	550	19	5	8	510	370	595	920	M20 x 42
280S	2	65	140	18	58	500	450	550	19	5	8	580	410	650	995	M20 x 42
	4 6 8	75	140	20	67.5	500	450	550	19	5	8	580	410	650	995	M20 x 42
280M	2	65	140	18	58	500	450	550	19	5	8	580	410	650	1045	M20 x 42
	4 6 8	75	140	20	67.5	500	450	550	19	5	8	580	410	650	1045	M20 x 42
315S	2	65	140	18	-	600	550	660	24	6	8	645	530	900	1280	-
	4 6 8 10	80	170	22	-	600	550	660	24	6	8	645	530	900	1510	-
315M	2	65	140	18	-	600	550	660	24	6	8	645	530	900	1310	-
	4 6 8 10	80	170	22	-	600	550	660	24	6	8	645	530	900	1430	-
315L	2	65	140	18	-	600	550	660	24	6	8	645	530	900	1310	-
	4 6 8 10	80	170	22	-	600	550	660	24	6	8	645	530	900	1430	-
355M	2	75	140	20	-	740	680	800	24	6	8	710	655	1010	1640	-
	4 6 8 10	95	170	25	-	740	680	800	24	6	8	710	655	1010	1670	-
355L	2	75	140	20	-	740	680	800	24	6	8	710	655	1010	1640	-
	4 6 8 10	95	170	25	-	740	680	800	24	6	8	710	655	1010	1670	-

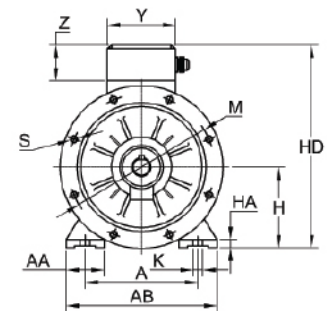
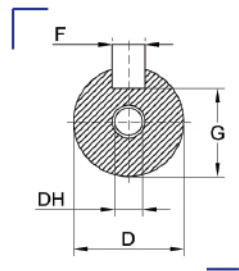
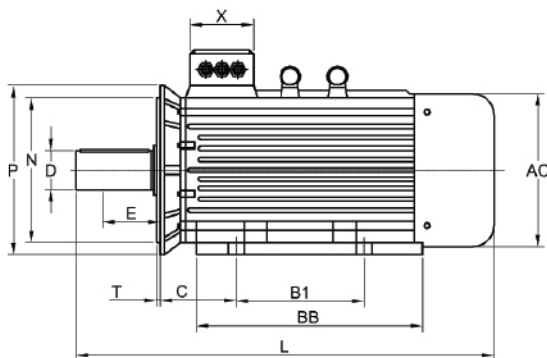
	Frame reference and size	Rated power	Full load current at rated voltage	Full load speed in revolutions per minute	Efficiency	Power factor	Direct on line starting torque ratio	Direct on line starting current ratio	Direct on line pull out torque ratio	Mean sound pressure level @ 1m on no load	Voltage
NO.	Type	Output kW	Amps A	Speed r/min	EFF. %	P.F. Cos ϕ	LRT RLT	LRA RLA	BDT RLT	Noise LwdB(A)	V
1	400L1-2	450	770	2980	96.3	0.92	1.5	6.5	2.2	108	380
2	400L2-2	500	844	2980	96.3	0.92	1.5	6.5	2.2	108	
3	400L3-2	560	952	2980	96.3	0.92	1.5	6.5	2.2	109	
4	450L1-2	560	552	2985	97.3	0.92	1	7	2.8	109	660
5	450L2-2	630	616	2980	96.3	0.92	1	7	2.8	109	
6	450L3-2	710	693	2985	96.5	0.92	1	7	2.8	109	
7	450L4-2	800	774	2985	96.6	0.92	1	7	2.8	109	380
8	400L1-4	450	792	1490	96.3	0.89	1.7	6.8	2.2	105	
9	400L2-4	500	878	1490	96.3	0.89	1.7	6.8	2.2	105	
10	400L3-4	560	978	1490	96.3	0.89	1.7	6.8	2.2	108	660
11	400L4-4	630	633	1490	96.3	0.89	1.7	6.8	2.2	108	
12	450L1-4	630	639	1490	96.5	0.89	1.6	7	2.6	108	
13	450L2-4	710	718	1490	96.5	0.89	1.6	7	2.6	108	380
14	450L3-4	800	806	1490	96.7	0.89	1.6	7	2.6	108	
15	450L4-4	900	905	1490	96.7	0.89	1.6	7	2.6	108	
16	400L1-6	355	649	990	96	0.86	2	6.5	2.2	98	660
17	400L2-6	400	729	990	96	0.86	2	6.5	2.2	98	
18	400L3-6	450	817	990	96	0.86	2	6.5	2.2	102	
19	400L4-6	500	906	990	96	0.86	2	6.5	2.2	102	380
20	450L1-6	500	534	990	96.2	0.86	1.6	7	2.6	102	
21	450L2-6	560	596	990	96.3	0.85	1.6	7	2.6	105	
22	450L3-6	630	670	990	96.5	0.85	1.6	7	2.6	105	660
23	450L4-6	710	751	990	96.5	0.85	1.6	7	2.6	105	
24	400L1-8	315	596	740	96	0.82	2.1	6.1	2.4	95	
25	400L2-8	355	676	740	96	0.82	2.1	6.1	2.4	95	380
26	400L3-8	400	757	740	96	0.82	2.1	6.1	2.4	99	
27	450L1-8	400	445	740	96	0.89	1.6	7	2.6	99	
28	450L2-8	450	499	740	96	0.82	1.6	7	2.6	99	660
29	450L3-8	500	553	740	96.2	0.82	1.6	7	2.6	99	
30	450L4-8	560	621	740	96.2	0.82	1.6	7	2.6	102	
31	400L1-10	250	512	590	95.2	0.77	2.1	6.5	2.4	99	380
32	400L2-10	315	639	590	96	0.77	2.1	6.5	2.4	99	
33	400L3-10	355	718	590	96	0.77	2.1	6.5	2.4	99	
34	450L1-10	355	732	590	95.6	0.77	1.6	7	2.6	99	
35	450L2-10	400	822	590	95.6	0.77	1.6	7	2.6	99	
36	450L3-10	450	927	590	95.6	0.77	1.6	7	2.6	99	

IM B3 H400-450
MOUNTING AND OVERALL DIMENSIONS OF IM B3 H400-450



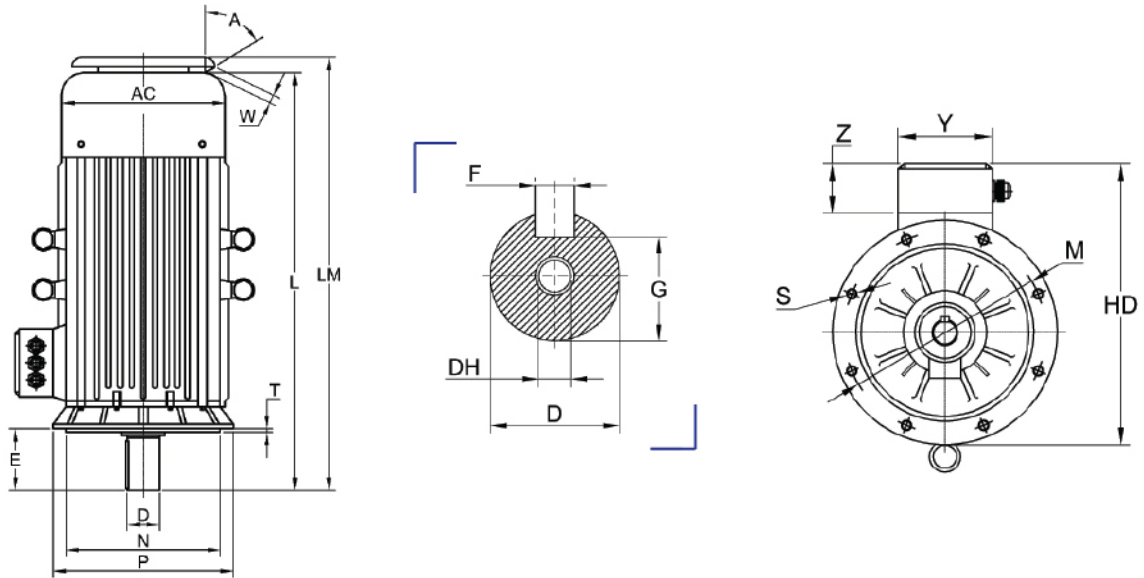
TYPE	Mounting Dimensions											Overall Dimensions												
	Poles	A	AA	AB	AC	B1	BB	C	D	DH	E	F	G	GD	H	HA	HD	K	L	AD	Eyeboit	X	Y	Z
400M	2	686	125	810	855	710	1090	335	∅ 85	M24 x 50	170	22	76	14	400	30	1080	∅ 35	1885	430	2xM36	430	540	225
400L	4 6 8 10								∅ 120		210	32	109	16					1925					
450M	2	710	150	860	855	710	1090	335	∅ 85	M24 x 50	170	22	76	14	450	80	1130	∅ 35	2050	430	2xM36	430	540	225
450L	4 6 8 10								∅ 120		210	32	109	16					2200					

IM B35 H400-450
MOUNTING AND OVERALL DIMENSIONS OF IM B35 H400-450

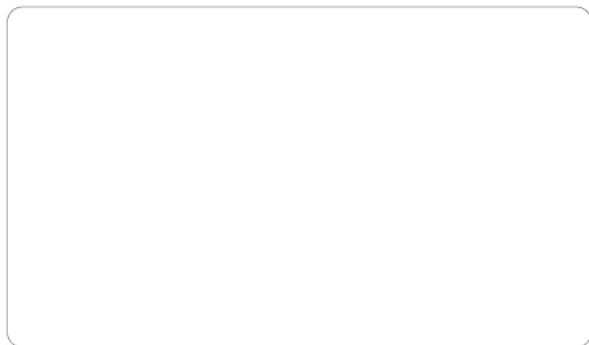


TYPE	Mounting Dimensions											Overall Dimensions													
	Poles	A	AA	AB	AC	B1	BB	C	D	E	H	HA	HD	DH	K	L	M	N	P	S	T	Eyeboit	X	Y	Z
400M	2	686	125	810	855	710	1090	335	∅ 85	170	400	30	1080	M24x50	∅ 35	1885	940	880	1000	8 x 28	6	2xM36	430	540	225
400L	4 6 8 10								∅ 120	210						1925									
450M	2	710	150	860	855	710	1090	335	∅ 85	170	450	80	1130	M24x50	∅ 35	1885	940	880	1000	8 x 28	6	2xM36	430	540	225
450L	4 6 8 10								∅ 120	210						1925									

IM V1 H400-450 MOUNTING AND OVERALL DIMENSIONS OF IM V1 H400-450



Type	Mounting Dimensions										Overall Dimensions										
	Poles	AC	D	E	F	G	GD	H	HD	DH	L	LM	M	N	P	S	T	Eyeboit	X	Y	Z
400M	2	855	Ø 85	170	22	76	14	400	1180	M24x50	1885	1985	940	880	1000	8 x Ø 28	6	4 x M36	430	540	225
400L	4 6 8 10		Ø 120	210	32	109	16				1925	2025									
450M	2	855	Ø 85	170	22	76	14	450	1180	M24x50	1885	1985	940	880	1000	8 x Ø 28	6	4 x M36	430	485	225
450L	4 6 8 10		Ø 120	210	32	109	18				1925	2025									



Power links to the world

