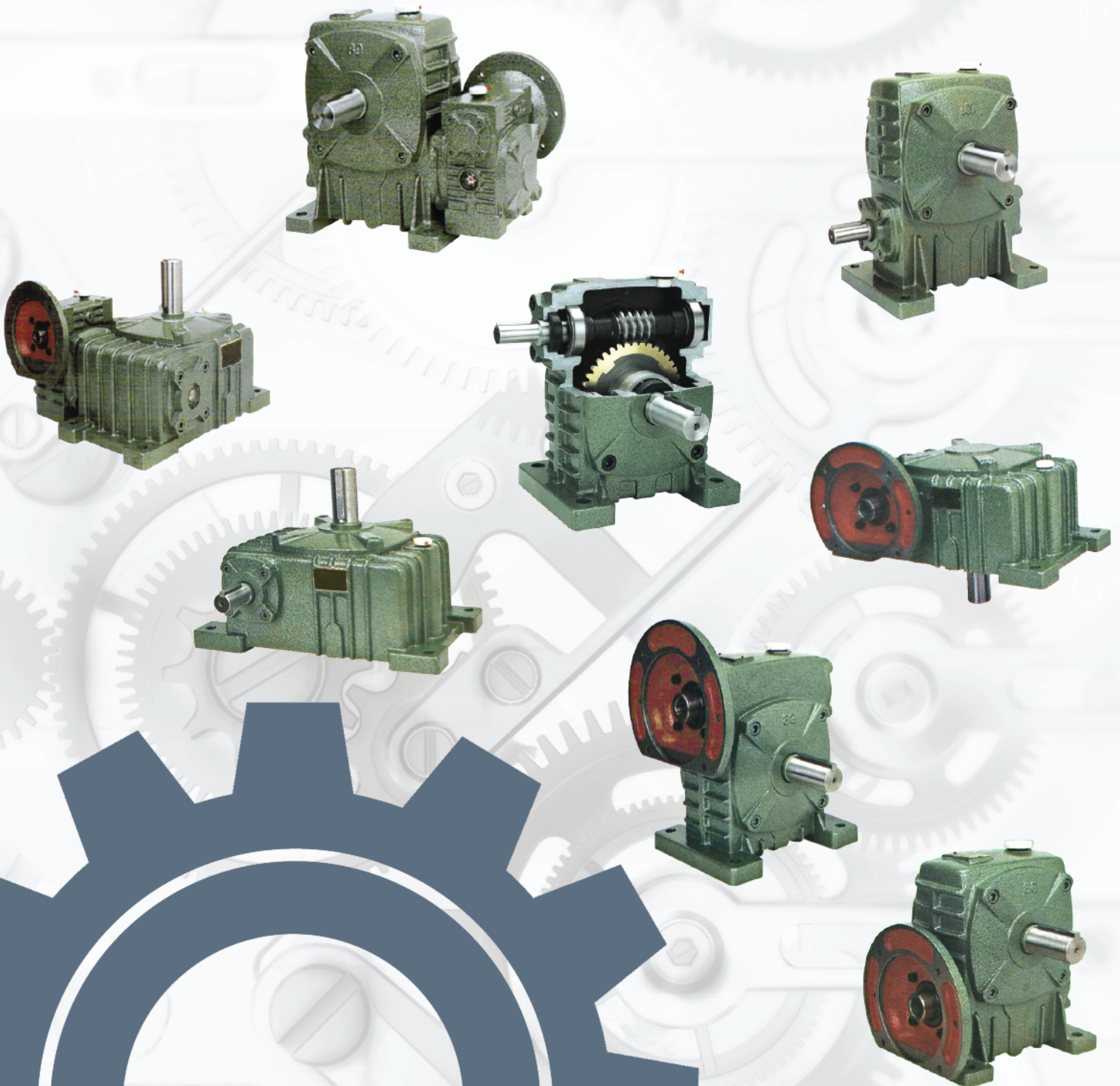
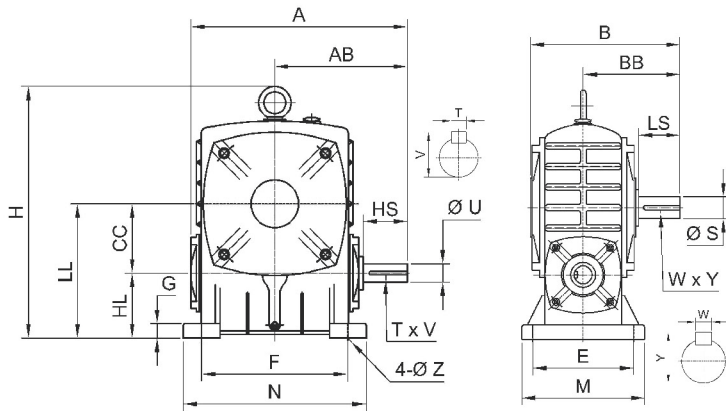


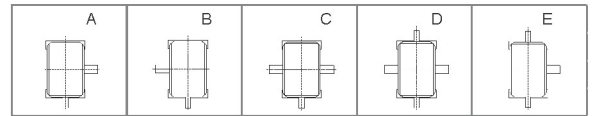
**WORM GEAR SPEED REDUCER
SPECIFICATION WORM GEAR**





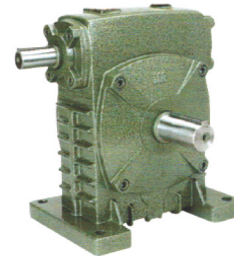
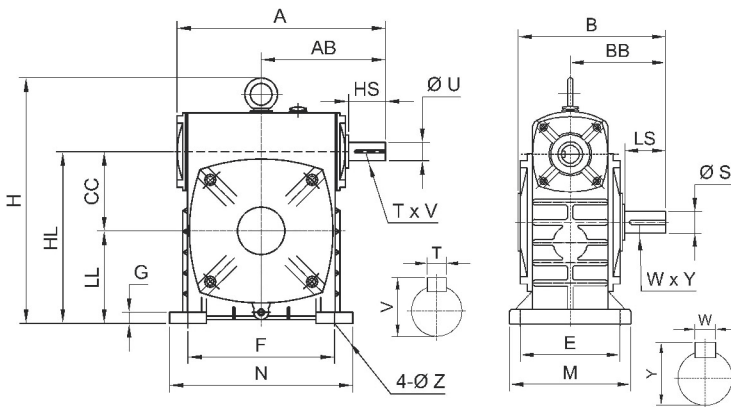
MCA (PA)

Shaft Direction

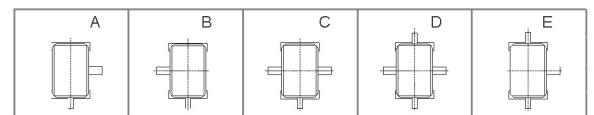


Size	Ratio	A	AB	B	BB	CC	E	F	H	HL	LL	M	N	G	Z	Input Shaft			Output Shaft			kg	L
																HS	U	T x V	LS	S	W x Y		
40	1/5	142	85	112	74	40	70	80	135	40	80	90	100	12	10	25	12	4 X 13.5	28	14	5 X 16	3.8	0.14
50		175	105	145	95	50	95	110	176	50	100	120	140	15	11	30	12	4 X 13.5	40	17	5 X 19	7	0.17
60	1/10	195	120	165	110	60	105	120	201	60	120	130	150	20	11	40	15	5 X 17	50	22	7 X 25	10.5	0.23
70	1/15	234	140	195	130	70	115	150	238	70	140	150	190	20	15	40	18	5 X 20	60	28	7 X 31	14.5	0.5
80		264	160	210	140	80	135	180	263	80	160	170	220	20	15	50	22	7 X 25	65	32	10 X 35.5	22	0.7
100	1/20	300	178	245	163	100	155	220	328	100	200	190	260	25	15	50	25	7 X 28	75	38	10 X 41.5	36	1.6
120	1/25	385	230	285	185	120	180	260	421	120	240	230	320	30	18	65	30	7 X 33	85	45	12 X 48.5	63	3.0
135	1/30	435	260	320	210	135	200	290	484	135	270	250	350	30	18	75	35	10 X 38.5	95	55	15 X 60	80	3.5
155	1/40	507	300	387	252	155	220	320	527	135	290	280	390	38	20	85	40	10 X 43.5	110	60	15 X 65	114	3.6
175	1/60	550	325	407	262	175	250	350	597	160	335	310	430	40	20	85	45	12 X 48.5	110	65	18 X 71	150	4.5
200		594	350	480	305	200	290	390	669	175	375	360	480	42	22	95	50	12 X 53.5	125	70	20 X 76	218	6.4
250		710	420	560	360	250	380	480	802	200	450	460	560	42	27	110	60	15 X 65	155	90	24 X 98	363	8.5

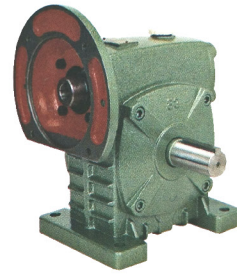
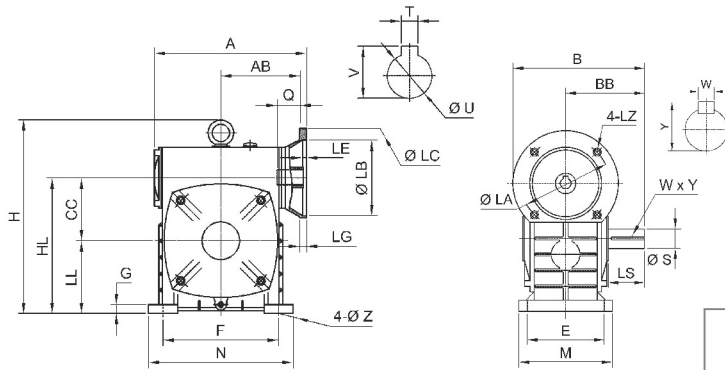
MCS (PR)



Shaft Direction

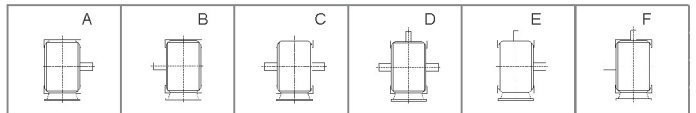


Size	Ratio	A	AB	B	BB	CC	E	F	H	HL	LL	M	N	G	Z	Input Shaft			Output Shaft			kg	L
																HS	U	T x V	LS	S	W x Y		
40	1/5	142	85	112	74	40	70	80	140	100	60	90	100	12	10	25	12	4 X 13.5	28	14	5 X 16	3.8	0.3
50		175	105	145	95	50	95	110	176	130	80	120	140	15	11	30	12	4 X 13.5	40	17	5 X 19	7	0.4
60	1/10	195	120	165	110	60	105	120	201	150	90	130	150	20	11	40	15	5 X 17	50	22	7 X 25	10.5	0.5
70	1/15	234	140	195	130	70	115	150	233	175	105	150	190	25	15	40	18	5 X 20	60	28	7 X 31	14.5	0.7
80		264	160	210	140	80	135	180	265	200	120	170	220	25	15	50	22	7 X 25	65	32	10 X 35.5	22	1.1
100	1/20	300	178	245	163	100	155	220	322	250	150	190	260	25	15	50	25	7 X 28	75	38	10 X 41.5	36	2.3
120	1/25	385	230	285	185	120	180	260	414	300	180	230	320	30	18	65	30	7 X 33	85	45	12 X 48.5	63	4.5
135	1/30	435	260	320	210	135	200	290	476	350	215	250	350	30	18	75	35	10 X 38.5	95	55	15 X 60	80	6.0
155	1/40	507	300	387	252	155	220	320	533	390	235	280	390	38	20	85	40	10 X 43.5	110	60	15 X 65	114	6.2
175	1/60	550	325	407	262	175	250	350	593	435	260	310	430	40	20	85	45	12 X 48.5	110	65	18 X 71	150	8.0
200		594	350	480	305	200	290	390	677	490	290	360	480	42	22	95	50	12 X 53.5	125	70	20 X 76	218	9.0
250		710	420	560	360	250	380	480	823	600	350	460	560	48	27	110	60	15 X 65	155	90	24 X 98	363	17.0

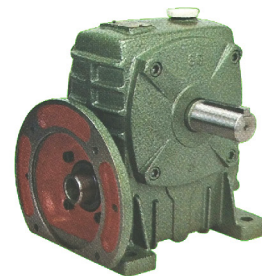
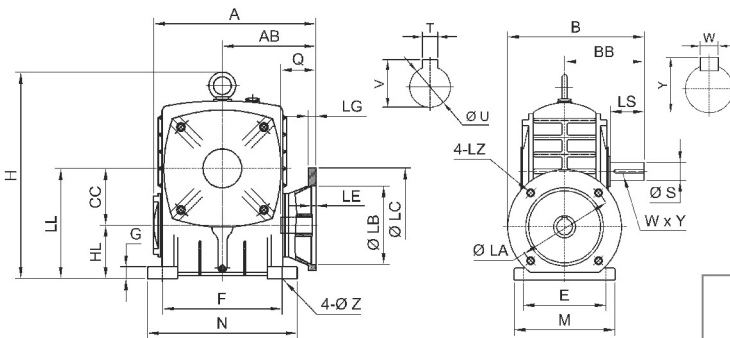


MCDS (PRF)

Shaft Direction

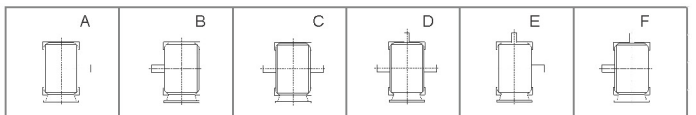


Size	kw	Ratio	A	AB	B	BB	CC	E	F	G	H	HL	LL	M	N	Z	Flange						Input Hole			Output Shaft			kg	
																	LA	LB	LC	LE	LG	LZ	Q	U	T x V	LS	S	W x Y		
50	0.18	1/10 1/20 1/30 1/40 1/50 1/60	155	84	165	95	50	95	110	15	176	130	80	120	140	11	115	95	140	5	10	M8	25	11	4 X 12.8	40	17	5 X 19	7	
60	0.37		170	92	190	110	60	105	120	20	201	150	90	130	150	11	130	110	160	5	12	M8	35	14	5 X 16.3	50	22	7 X 25	11	
70	0.37		0.75	206	110	210	130	70	115	150	20	233	175	105	150	190	15	130	110	160	5	12	M8	35	14	5 X 16.3	60	28	7 X 31	14
	230					15																M10								
80	0.75		1.5	232	128	240	140	80	135	180	20	265	200	120	170	220	15	165	130	200	5	15	M10	45	19	6 X 21.8	65	32	10 X 35.5	23
	55																					24		8 X 27.3						
100	1.5		2.2	266	145	263	163	100	155	220	25	322	250	150	190	260	15	165	130	200	5	12	M10	52	24	8 X 27.3	75	38	10 X 41.5	38
	270																					149		288	15	M12				
120	2.2		3.0	340	182	310	185	120	180	260	30	414	300	180	230	320	18	215	180	250	5	18	M12	65	28	8 X 31.3	85	45	12 X 48.5	65
	1/60																					18		M12	65	28				
135	3.0		4.0	375	200	335	210	135	200	290	30	476	350	215	250	350	18	215	180	250	5	18	M12	65	28	8 X 31.3	95	55	15 X 60	84
	1/50																					18		M12	65	28				
155	5.5	7.5	442	236	402	252	155	220	320	32	533	390	235	280	390	20	265	230	300	5	20	M12	85	38	10 X 41.3	110	60	15 X 65	120	
175	7.5		465	240	412	262	175	250	350	40	593	435	260	310	430	20	265	230	300	6	18	M12	85	38	10 X 41.3	110	65	18 X 71	155	

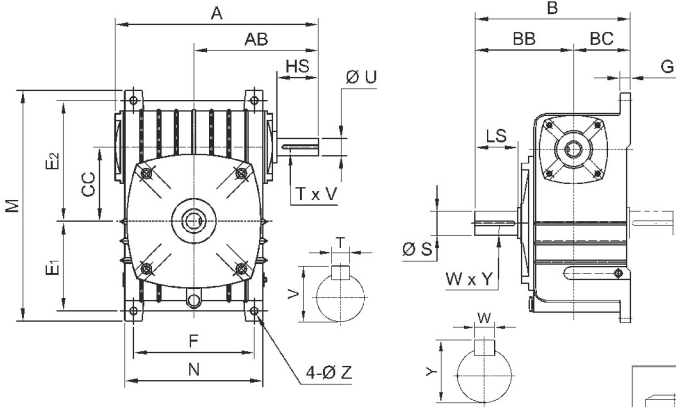


MCDA (PAF)

Shaft Direction

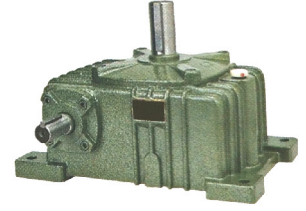
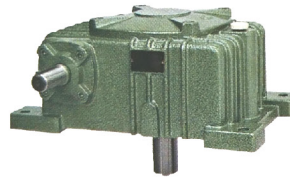


Size	kw	Ratio	A	AB	B	BB	CC	E	F	G	H	HL	LL	M	N	Z	Flange						Input Hole			Output Shaft			kg	
																	LA	LB	LC	LE	LG	LZ	Q	U	T x V	LS	S	W x Y		
50	0.18	1/5 1/10 1/15 1/20 1/25 1/30 1/40 1/50 1/60	155	84	165	95	50	95	110	15	176	50	100	120	140	11	115	95	140	5	10	M8	25	11	4 X 12.8	40	17	5 X 19	7	
60	0.37		170	92	190	110	60	105	120	20	201	60	120	130	150	11	130	110	160	5	12	M8	35	14	5 X 16.3	50	22	7 X 25	11	
70	0.37		0.75	206	110	210	130	70	115	150	20	238	70	140	150	190	15	130	110	160	5	12	M8	35	14	5 X 16.3	60	28	7 X 31	15
	230					15																M10								
80	0.75		1.5	232	128	240	140	80	135	180	20	263	80	160	170	220	15	165	130	200	5	15	M10	45	19	6 X 21.8	65	32	10 X 35.5	23
	55																					24		8 X 27.3						
100	1.5		2.2	266	145	263	163	100	155	220	25	328	100	200	190	260	15	165	130	200	5	12	M10	52	24	8 X 27.3	75	38	10 X 41.5	38
	270																					149		288	15	M12				
120	2.2		3.0	340	182	310	185	120	180	260	30	421	120	240	230	320	18	215	180	250	5	18	M12	65	28	8 X 31.3	85	45	12 X 48.5	65
	1/30																					18		M12	65	28				
135	3.0		4.0	375	200	335	210	135	200	290	30	484	135	270	250	350	18	215	180	250	5	18	M12	65	28	8 X 31.3	95	55	15 X 60	84
	1/40																					18		M12	65	28				
155	5.5	7.5	442	236	402	252	155	220	320	32	527	135	290	280	380	20	265	230	300	5	20	M12	85	38	10 X 41.3	110	60	15 X 65	120	
175	7.5		465	240	412	262	175	250	350	40	597	160	335	310	430	20	265	230	300	5	18	M12	85	38	10 X 41.3	110	65	18 X 71	155	
200	7.5	11	508	270	455	305	200	290	390	42	669	175	375	360	480	22	265	230	300	6	18	M12	85	38	10 X 41.3	125	70	20 X 76	225	
					480																									115



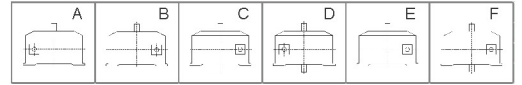
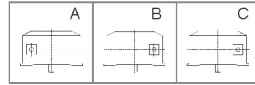
MCX (PO-RD)

MCO (PO-RU)

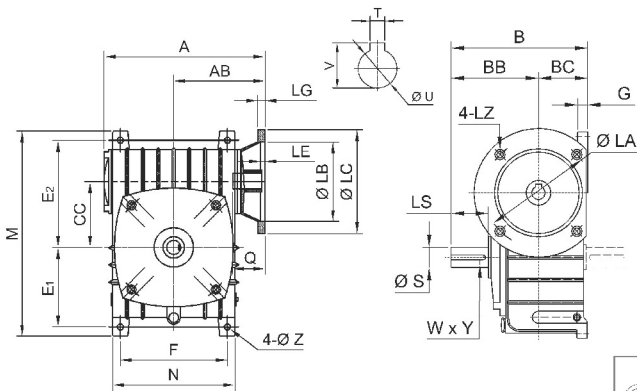


MCX Shaft Direction

MCO Shaft Direction

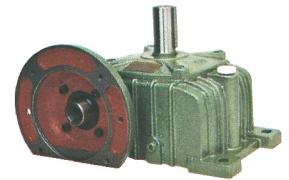
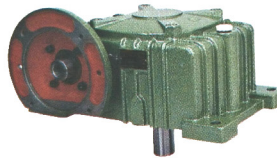


Size	Ratio	A	AB	B	BB	BC	CC	E ₁	E ₂	F	G	M	N	Z	Input Shaft			Output Shaft			kg	L
															HS	U	T x V	LS	S	W x Y		
40	1/5	142	85	114	74	40	40	72	85	75	12	179	97	10	25	12	4 X 13.5	28	14	5 X 16	3.8	0.35
50		175	105	145	95	50	50	93	102	90	14	220	116	11	30	12	4 X 13.5	40	17	5 X 19	6.5	0.5
60	1/10	195	120	165	110	55	60	105	120	100	15	260	126	11	40	15	5 X 17	50	22	7 X 25	9	0.6
70		234	140	195	130	65	70	120	135	120	20	295	156	15	40	18	5 X 20	60	28	7 X 31	14	1.1
80	1/15	264	160	210	140	70	80	130	150	140	20	320	176	15	50	22	7 X 25	65	32	10 X 35.5	21	1.44
100	1/20	300	178	253	163	90	100	155	180	190	30	375	226	15	50	25	7 X 28	75	38	10 X 41.5	33	3.0
120	1/25	385	230	285	185	100	120	185	215	220	30	450	266	18	65	30	7 X 33	85	45	12 X 48.5	51	5.1
135	1/30	435	260	320	210	110	135	210	235	260	35	495	306	18	75	35	10 X 38.5	95	55	15 X 60	75	7.2
155	1/40	507	300	392	252	140	155	245	295	290	45	590	350	20	85	40	10 X 43.5	110	60	15 X 65	115	9.0
175	1/60	550	325	412	262	150	175	267	323	320	45	640	394	20	85	45	12 X 48.5	110	65	18 X 71	143	10
200		594	350	480	305	175	200	290	360	370	42	710	440	22	95	50	12 X 53.5	125	70	20 X 76	200	12
250		710	420	560	360	200	250	350	440	440	46	860	510	27	110	60	15 X 65	155	90	24 X 98	345	22



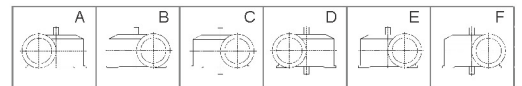
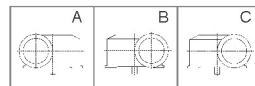
MCDX (PO-RDF)

MCDO (PO-RUF)



MCDX Shaft Direction

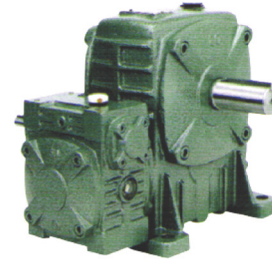
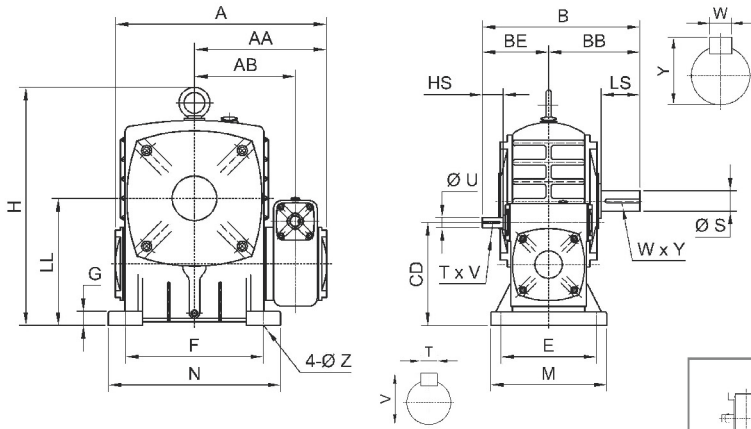
MCDO Shaft Direction



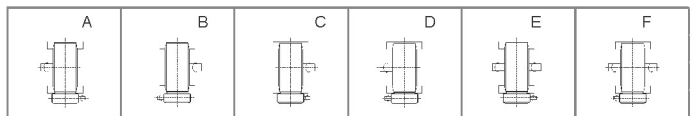
Size	kw	Ratio	A	AB	B	BB	BC	CC	E ₁	E ₂	F	G	M	N	Z	Flange				Input Hole			Output Shaft			kg			
																LA	LB	LC	LE	LG	LZ	Q	U	T x V	LS		S	W x Y	
50	0.18	1/5	155	84	145	95	50	50	93	102	90	14	220	116	11	115	95	140	5	10	M8	25	11	4 X 12.8	40	17	5 X 19	7	
60	0.37		170	92	165	110	55	60	105	120	100	15	260	126	11	130	110	160	5	12	M8	35	14	5 X 16.3	50	22	7 X 25	10	
70	0.37	1/10	206	110	195	130	65	70	120	135	120	20	295	156	15	130	110	160	5	12	M8	35	14	5 X 16.3	60	28	7 X 31	15	
	0.75																165	130	200	15	15	M10	45	19	6 X 21.8				
80	0.75	1/15	232	128	210	140	70	80	130	150	140	20	320	176	15	165	130	200	5	15	M10	45	19	6 X 21.8	65	32	10 X 35.5	23	
	1.5																												
100	1.5	1/20	266	145	253	163	90	100	155	180	190	30	375	226	15	165	130	200	5	12	M10	52	24	8 X 27.3	75	38	10 X 41.5	36	
	2.2			270	149												215	180	250	5	15	M12	62	28	8 X 31.3				
120	2.2	1/25	340	182	285	185	100	120	185	215	220	30	450	266	18	215	180	250	5	18	M12	65	28	8 X 31.3	85	45	12 X 48.5	55	
	3.0	1/40																											
135	3.0			375	200	320	210	110	135	210	235	260	35	495	306	18	215	180	250	5	18	M12	65	28	8 X 31.3	95	55	15 X 60	80
	4.0	1/60																											
155	5.5			442	236	392	252	140	155	245	295	290	45	590	350	20	265	230	300	5	20	M12	85	38	10 X 41.3	110	60	15 X 65	120
175	7.5	1/50	465	240	412	262	150	175	267	323	320	45	640	394	20	265	230	300	6	18	M12	85	38	10 X 41.3	110	65	18 X 71	150	
	11																265	230	300	6	18	M12	85	38	10 X 41.3	125	70	20 X 7	220
200	7.5	1/60	508	270	480	305	175	200	290	360	370	42	710	440	22	265	230	350	6	18	M12	110	42	12 X 45.3					



MCEA (PDA)

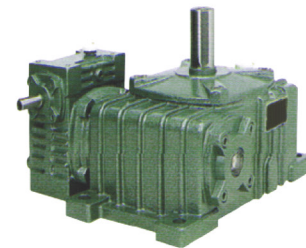
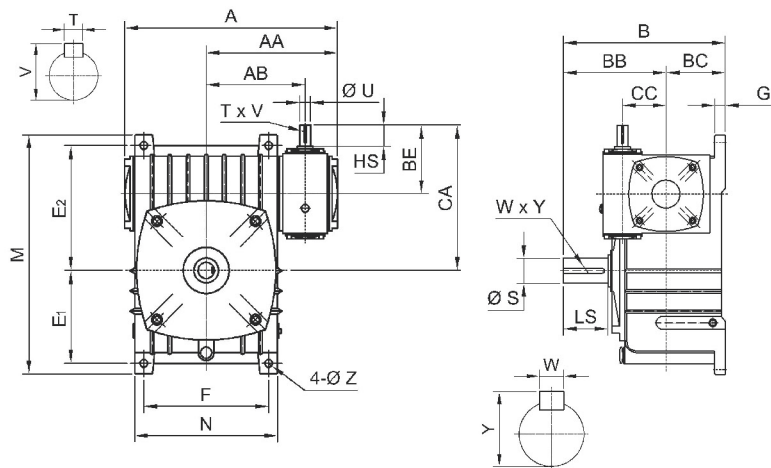


Shaft Direction

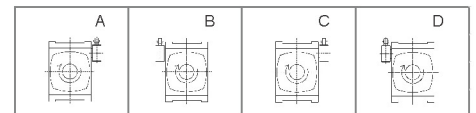


Size	Ratio	A	AA	AB	B	BB	BE	CD	E	F	G	H	LL	M	N	Z	Input Shaft			Output Shaft		
																	HS	U	T x V	LS	S	W x Y
40-60		232	156	112	201	110	90	100	105	120	20	201	120	130	150	11	25	12	4 x 13.5	50	22	7 x 25
50-80	1/200	297	196	139	245	140	105	130	135	180	20	263	160	170	220	15	30	12	4 x 13.5	65	32	10 x 35.5
60-100	1/300	337	215	161	283	163	120	160	155	220	25	328	200	190	260	15	40	15	5 x 17	75	38	10 x 41.5
70-120	1/400	412	258	195	325	185	140	190	180	260	30	421	240	230	320	18	40	18	5 x 20	85	45	12 x 48.5
80-135	1/500	475	300	230	370	210	160	215	200	290	30	484	270	250	350	18	50	22	7 x 25	95	55	15 x 60
100-155	1/600	549	349	265	430	252	178	235	220	320	38	527	290	280	390	20	50	25	7 x 28	110	60	15 x 65
120-175	1/800	605	385	290	492	262	230	280	250	350	40	597	335	310	430	20	65	30	7 x 33	110	65	18 x 71
135-200	1/900	674	431	323	565	305	260	310	290	390	42	669	375	360	480	22	75	35	10 x 38.5	125	70	20 x 76

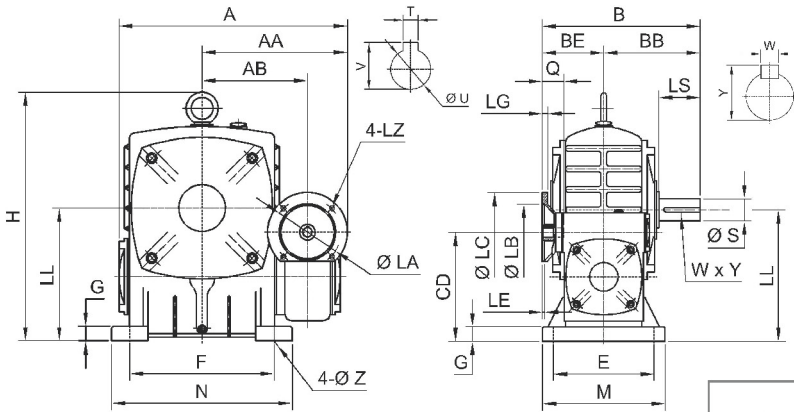
MCEO (PDO)



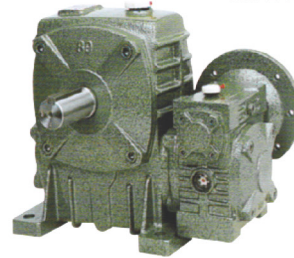
Shaft Direction



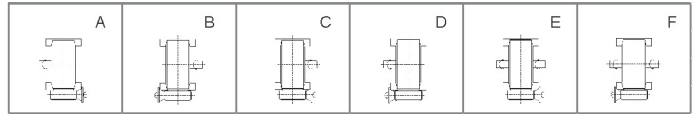
Size	Ratio	A	AA	AB	B	BB	BC	BE	CA	CC	E ₁	E ₂	F	G	M	N	Z	Input Shaft			Output Shaft		
																		HS	U	T x V	LS	S	W x Y
50-80	1/200	297	192	139	210	140	70	105	185	50	130	150	140	20	320	176	15	30	12	4 x 13.5	65	32	10 x 35.5
60-100	1/300	337	215	161	245	163	90	120	220	60	155	180	190	30	375	226	15	40	15	5 x 17	75	38	10 x 41.5
70-120	1/400	412	258	195	285	185	100	140	260	70	185	215	220	30	450	266	18	40	18	5 x 20	85	45	12 x 48.5
80-135	1/500	475	300	230	320	210	110	160	295	80	210	235	260	35	495	306	18	50	22	7 x 25	95	55	15 x 60
100-155	1/600	549	349	265	392	252	140	178	333	100	245	295	290	40	590	350	20	50	25	7 x 28	110	60	15 x 65
120-175	1/800	605	385	290	412	262	150	230	405	120	267	323	320	45	640	394	20	65	30	7 x 33	110	65	18 x 71
135-200	1/900	674	431	323	480	305	175	260	460	135	290	360	360	42	710	440	22	75	35	10 x 38.5	125	70	20 x 76



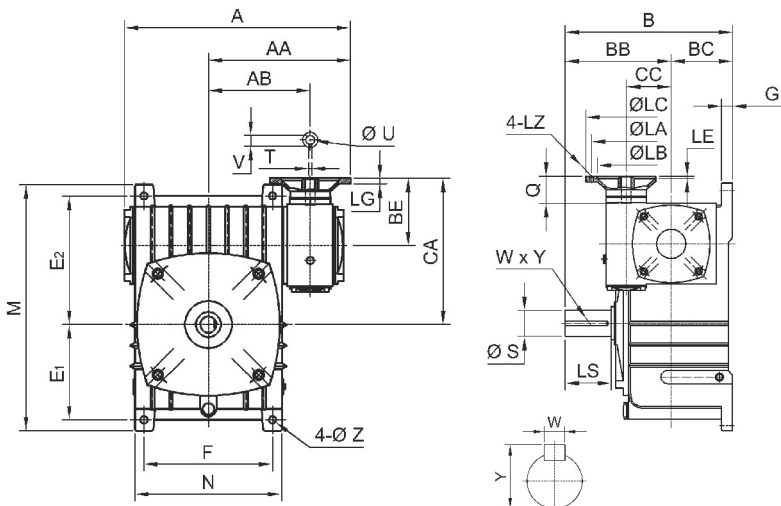
MCEDA (PDA-F)



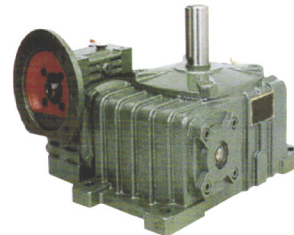
Shaft Direction



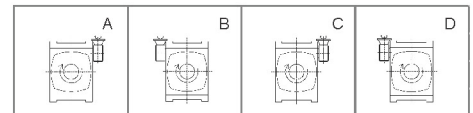
Size	kw	Ratio	A	AA	AB	B	BB	BE	CD	E	F	G	H	LL	M	N	Z	Flange					Input Hole			Output Shaft			
																		LA	LB	LC	LE	LG	LZ	Q	U	T x V	LS	S	W x Y
40-60	0.12	1/200	258	182	112	186	110	76	100	105	120	20	201	120	130	150	11	115	95	140	5	10	M8	25	11	4 x 12.8	50	22	7 x 25
50-80	0.18		314	209	139	224	140	84	130	135	180	20	263	160	170	220	15	115	95	140	5	10	M8	25	11	4 x 12.8	65	32	10 x 35.5
60-100	0.37		363	241	161	255	163	92	160	155	220	25	328	200	190	260	15	130	110	160	5	12	M8	35	14	5 x 16.3	75	38	10 x 41.5
70-120	0.37	1/300	429	275	195	295	185	110	190	180	260	30	421	240	230	320	18	130	110	160	5	12	M8	35	14	5 x 16.3	85	45	12 x 48.5
	0.75		449	295																									
80-135	0.75	1/400	505	330	230	338	210	128	215	200	290	30	484	270	250	350	18	165	130	200	5	15	M10	45	19	6 x 21.8	95	55	15 x 60
	1.5																							55	24	8 x 27.3			
	1/500																							565	365	265			
100-155	1.5	1/600	565	365	265	397	252	145	235	220	320	38	527	290	280	390	20	165	130	200	5	12	M10	52	24	8 x 27.3	110	60	15 x 65
	2.2																												
120-175	2.2	1/900	635	415	290	444	262	182	280	250	350	40	597	335	310	430	20	215	180	250	5	18	M12	65	28	8 x 31.3	110	65	18 x 71
	3.0																												
135-200	3.0	4.0	691	448	323	505	305	200	310	290	390	42	669	375	360	480	22	215	180	250	5	18	M12	65	28	8 x 31.3	125	70	20 x 76
	4.0																												



MCEDO (PDO-F)



Shaft Direction



Size	kw	Ratio	A	AA	AB	B	BB	BC	BE	CA	CC	E1	E2	F	G	M	N	Z	Flange					Input Hole			Output Shaft			
																			LA	LB	LC	LE	LG	LZ	Q	U	T x V	LS	S	W x Y
50-80	0.18	1/200	314	209	139	210	140	70	84	164	50	130	150	140	20	320	176	15	115	95	140	5	10	M8	25	11	4 x 12.8	65	32	10 x 35.5
60-100	0.37		363	241	161	253	163	90	92	192	60	155	180	190	30	375	226	15	130	110	160	5	12	M8	35	14	5 x 16.3	75	38	10 x 41.5
70-120	0.37		429	275	195	285	185	100	110	230	70	185	215	220	30	450	266	18	130	110	160	5	12	M8	35	14	5 x 16.3	85	45	12 x 48.5
0.75	449	295	15	15																										
80-135	0.75	1/300	505	330	230	320	210	110	128	263	80	210	235	260	35	495	306	18	165	130	200	5	15	M10	45	19	6 x 21.8	95	55	15 x 60
	1.5																								55	24	8 x 27.3			
	1/400																								565	365	265			
100-155	1.5	1/500	565	365	265	392	252	140	149	304	100	245	295	290	40	590	350	20	165	130	200	5	12	M10	52	24	8 x 27.3	110	60	15 x 65
	2.2																													
120-175	2.2	1/900	635	415	290	412	262	150	182	357	120	267	323	320	45	640	394	20	215	180	250	5	18	M12	65	28	8 x 31.3	110	65	18 x 71
	3.0																													
135-200	3.0	4.0	691	448	323	480	305	175	200	400	135	290	360	370	42	710	440	22	215	180	250	5	18	M12	65	28	8 x 31.3	125	70	20 x 76
	4.0																													